

Transponder

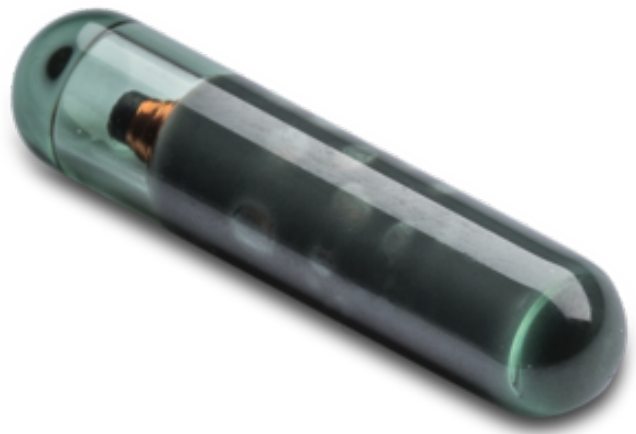
Glass TAG

PART ID:**1042-01-269-00**

Glass Tag transponders can be easily inserted or molded into a variety of materials, to enable automated asset identification and management applications using RFID. Manufactured with patented dBond™ technology, these tags deliver exceptional size to performance ratios, in both low frequency and high frequency applications. The inherent properties of glass protect embedded electronics from exposure to harsh chemicals, ensure that tag readability is unaffected by immersion in liquids, and provide excellent stability over fluctuating temperatures.

Main Specifications

Material	Glass
Operating Temperature	-25°C to 85°C
IP Class	IP68
Compliance	RoHs & Reach, CE
Key Features	Small Size, Heat Tolerant, Versatile, High Durability



Chip Specification (Chip 269)

Chip	EM Marin - Vigo
Frequency	13.56 MHz (HF)
Memory	1024 bit
Norm	ISO 15693

Full Specifications

Product ID	1042
Material	Glass
Shape	Potted
Long Description	Glass Tag transponders can be easily inserted or molded into a variety of materials, to enable automated asset identification and management applications using RFID. Manufactured with patented dBond™ technology, these tags deliver exceptional size to performance ratios, in both low frequency and high frequency applications. The inherent properties of glass protect embedded electronics from exposure to harsh chemicals, ensure that tag readability is unaffected by immersion in liquids, and provide excellent stability over fluctuating temperatures.
Key Features	Small Size, Heat Tolerant, Versatile, High Durability
Main Use	Embeddable RFID
Article Type	Glass TAG

Color	Transparent
Diameter [mm]	3.15
Length [mm]	13.3
Operating Temp °C (min)	-25
Operating Temp °C (max)	85
Storage Temp °C (min)	-40
Storage Temp °C (max)	90
Peak Temp I / °C	120
Peak TIME I [h]	100
Peak Temp II / °C	140
Peak TIME II [h]	10
High Temp	yes
Food compatible	yes
IP Class	IP68
Chemical Resistance	Not Specified
Flame Resistance	Not Specified
Mechanical Resistance	Not Specified
Attachment Method	Embed
Compliance	RoHs & Reach, CE

VARIANTS AND ICS

ID	Variant	Band	Type	ISO
1042-01-152-00	3.15x13.3mm	LF	EM4200/Unique	ISO/IEC 11784/85 Compatible
1042-01-112-00	3.15x13.3mm	LF	HITAG S 256	ISO/IEC 11784 & 11785 & 14223
1042-01-113-00	3.15x13.3mm	LF	HITAG S 2048	ISO/IEC 11784 & 11785 & 14223
1042-01-154-00	3.15x13.3mm	LF	Nova	
1042-01-103-00	3.15x13.3mm	LF	EM 4550	ISO/IEC 11784/85 Compatible
1042-01-269-00	3.15x13.3mm	HF	Vigo	ISO 15693