

Windshield Label

Transponder Label

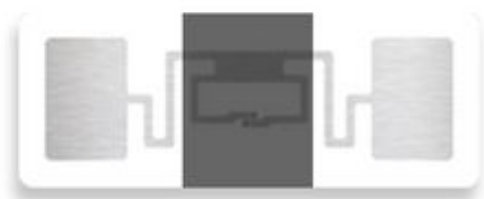
PART ID:

1058-01-349-00

Windshield Label is engineered to be put on the windshield to challenge all-weather conditions. The chip area is coated to fight against UV rays. Its tamper proof function can leave mark of any intent of removal.

Main Specifications

Material	BOPP / Polypropylen
Operating Temperature	-20°C to 70°C
IP Class	IP68
Compliance	RoHs & Reach, CE
Key Features	Heat Tolerant, Ultra Thin, High Durability
Options	Preprinted Artwork, Logo



Chip Specification (Chip 349)

Chip	Alien - Higgs 3
Frequency	869 MHz (UHF)
Memory	TID 64 Bit; EPC 96 Bit; User 512 Bit
Norm	ISO 18000-6C / EPC Gen2 V2

Full Specifications

Product ID	1058
Name	Windshield Label
Material	BOPP / Polypropylen
Shape	Label structure square
Long Description	Windshield Label is engineered to be put on the windshield to challenge all-weather conditions. The chip area is coated to fight against UV rays. Its tamper proof function can leave mark of any intent of removal.
Key Features	Heat Tolerant, Ultra Thin, High Durability
Options	Preprinted Artwork, Logo
Main Use	Traffic Application
Article Type	Label
Color	White
Length [mm]	60

©TECTUS reserves the right to change any information or data in this document without prior notice. The distribution and the update of this document is not controlled. TECTUS declines all responsibility for the use of products with any other specifications but the ones mentioned above. Any additional requirement for a specific customer application has to be validated by the customer himself at his own responsibility.

Where application information is given, it is only advisory and does not form part of the specification.

Width [mm]	18
Operating Temp °C (min)	-20
Operating Temp °C (max)	70
IP Class	IP68
Chemical Resistance	Not Specified
Flame Resistance	Not Specified
Mechanical Resistance	Not Specified
Attachment Method	Embed
Compliance	RoHs & Reach, CE

VARIANTS AND ICS

ID	Variant	Band	Type	ISO
1058-01-349-00	60x18mm	UHF	Higgs 3	ISO 18000-6C / EPC Gen2 V2