

HDX BDE

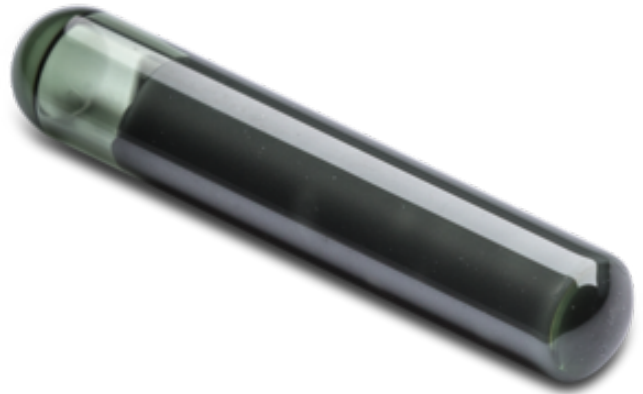
Transponder
Glass TAG

PART ID:
1044

Embeddable RFID Glass Tags with high chemical resistance and exceptional performance

Main Specifications

| | |
|-----------------------|-------------------------------------------------------|
| Frequencies | LF HF UHF |
| Material | Glass |
| Operating Temperature | -25°C to 85°C |
| IP Class | IP68 |
| Compliance | RoHs & Reach, CE |
| Key Features | Small Size, Heat Tolerant, Versatile, High Durability |



Full Specifications

| | |
|-------------------------|---------------------------------------------------------------------------------------------------------------------------------------------------------------------------------------------------------------------------------------------------------------------------------------------------------------------------------------------------------------------------------------------------------|
| Product ID | 1044 |
| Name | HDX BDE |
| Material | Glass |
| Shape | Potted |
| Short Description | Embeddable RFID Glass Tags with high chemical resistance and exceptional performance |
| Long Description | Glass Tag transponders can be easily inserted or molded into a variety of materials, to enable automated asset identification and management applications using RFID. The inherent properties of glass protect embedded electronics from exposure to harsh chemicals, ensure that tag readability is unaffected by immersion in liquids, and provide excellent stability over fluctuating temperatures. |
| Key Features | Small Size, Heat Tolerant, Versatile, High Durability |
| Main Use | Embeddable RFID |
| Article Type | Glass TAG |
| Color | Transparent |
| Diameter [mm] | 3.85 |
| Length [mm] | 22.5 |
| Operating Temp °C (min) | -25 |
| Operating Temp °C (max) | 85 |

®TECTUS reserves the right to change any information or data in this document without prior notice. The distribution and the update of this document is not controlled. TECTUS declines all responsibility for the use of products with any other specifications but the ones mentioned above. Any additional requirement for a specific customer application has to be validated by the customer himself at his own responsibility.

Where application information is given, it is only advisory and does not form part of the specification.

| | |
|-----------------------|------------------|
| Storage Temp °C (min) | -40 |
| Storage Temp °C (max) | 90 |
| Peak Temp I / °C | 120 |
| Peak TIME I [h] | 100 |
| Peak Temp II / °C | 140 |
| Peak TIME II [h] | 10 |
| High Temp | yes |
| Food compatible | yes |
| IP Class | IP68 |
| Chemical Resistance | Not Specified |
| Flame Resistance | Not Specified |
| Mechanical Resistance | Not Specified |
| Attachment Method | Embed |
| Compliance | RoHs & Reach, CE |

VARIANTS AND ICS

| ID | Variant | Band | Type | ISO |
|----------------|--------------|------|--------------|---------------------|
| 1044-01-164-00 | 3.85.x22.5mm | LF | SIC 279/7999 | ISO 11784/11785 HDX |