

# HDX BDE

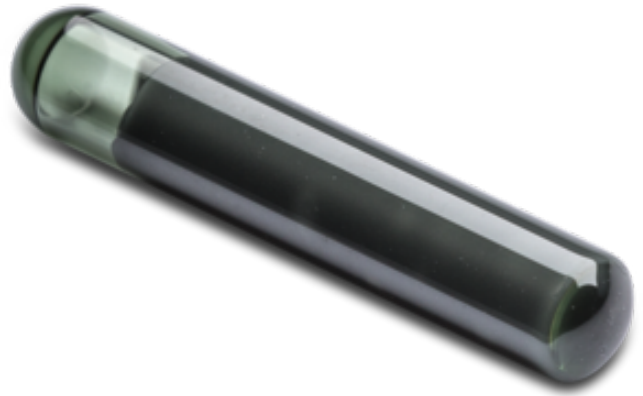
Transponder  
Glass TAG

**PART ID:**  
**1044-01-164-00**

Embeddable RFID Glass Tags with high chemical resistance and exceptional performance

## Main Specifications

Material	Glass
Operating Temperature	-25°C to 85°C
IP Class	IP68
Compliance	RoHs & Reach, CE
Key Features	Small Size, Heat Tolerant, Versatile, High Durability



## Chip Specification (Chip 164)

Chip	Silicon Craft - SIC 279/7999
Frequency	134.2 kHz ( LF )
Memory	UID 128 Bit, User 192 Bit
Norm	ISO 11784/11785 HDX
Comment	HDX ISO Animal / BDE

## Full Specifications

Product ID	1044
Name	HDX BDE
Material	Glass
Shape	Potted
Short Description	Embeddable RFID Glass Tags with high chemical resistance and exceptional performance
Long Description	Glass Tag transponders can be easily inserted or molded into a variety of materials, to enable automated asset identification and management applications using RFID. The inherent properties of glass protect embedded electronics from exposure to harsh chemicals, ensure that tag readability is unaffected by immersion in liquids, and provide excellent stability over fluctuating temperatures.
Key Features	Small Size, Heat Tolerant, Versatile, High Durability
Main Use	Embeddable RFID
Article Type	Glass TAG
Color	Transparent
Diameter [mm]	3.85

© 2025 TECTUS Technology GmbH. All rights reserved.

The content, design, and technical data of this specification are the intellectual property of TECTUS. TECTUS reserves the right to change any information or data in this document without prior notice. TECTUS declines all responsibility for the use of products with any other specifications, but the ones mentioned above. Any additional requirement for a specific customer application must be validated by the customer himself at his own responsibility. Where application information is given, it is only advisory and does not form part of the specification.

Length [mm]	22.5
Operating Temp °C (min)	-25
Operating Temp °C (max)	85
Storage Temp °C (min)	-40
Storage Temp °C (max)	90
Peak Temp I / °C	120
Peak TIME I [h]	100
Peak Temp II / °C	140
Peak TIME II [h]	10
High Temp	yes
Food compatible	yes
IP Class	IP68
Chemical Resistance	Not Specified
Flame Resistance	Not Specified
Mechanical Resistance	Not Specified
Attachment Method	Embed
Compliance	RoHs & Reach, CE

## VARIANTS AND ICS

ID	Variant	Band	Type	ISO
1044-01-164-00	3.85.x22.5mm	LF	SIC 279/7999	ISO 11784/11785 HDX